

The logo for INTenSE, featuring the text "INTenSE" in a sans-serif font. The "en" is in a light blue color, while "INT" and "SE" are in black. The text is enclosed within a stylized blue and purple oval shape that resembles a lens or a pair of eyes.

INTenSE

# Dementia Simulation Toolkit

Scenario: Social Interaction

**socialIT**  
software & consulting



MARTIN-LUTHER-UNIVERSITÄT  
HALLE-WITTENBERG



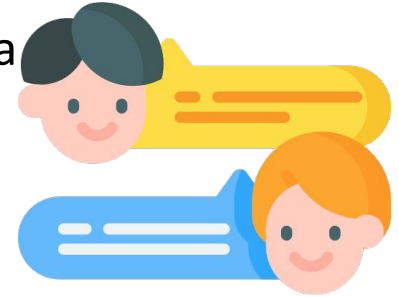
**Maastricht University**

Co-funded by the  
Erasmus+ Programme  
of the European Union



# Social Interaction

People with dementia may have difficulty keeping up with a conversation resulting in them saying things that don't apply to what is being discussed, or answering questions with inappropriate responses.

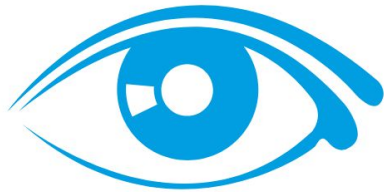


This scenario will teach participants the importance of adapting their communication styles when interacting with people with dementia

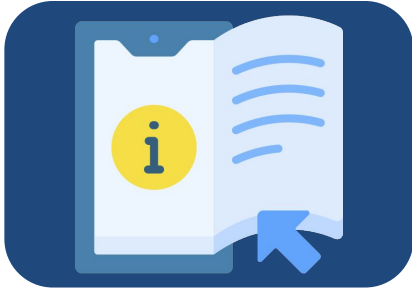
# Aims:

The aim of this training scenario is to simulate how social interactions can be difficult for people with dementia to engage in.

This scenario also aims to educate participants about how sensory changes (e.g., hearing and vision loss) can impact a person's ability to communicate and interact socially.



# Simulation Activity: Social Interaction



**Instructions**



**Simulation Glasses**



**Headphones**

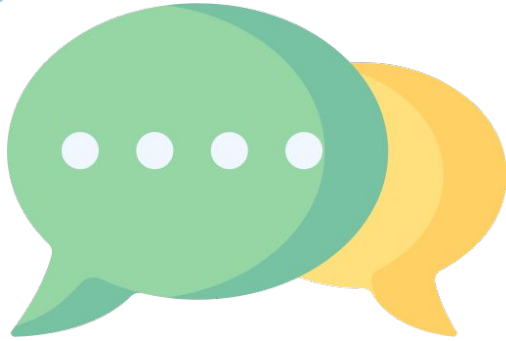


**15 mins**

- 1) Person with dementia
- 2) Friend of the person with dementia
- 3) Friend of the person with dementia



Role descriptions and scripts for students are available to download separately on the INTenSE platform



# Group reflection

What did the participants notice and learn about social interaction and communication in this scenario?

How each of the participants felt in the roles they played?

## Group reflection

How would you approach a situation like this the next time you are in a social environment with someone with dementia?





Co-funded by the  
Erasmus+ Programme  
of the European Union



**socialIT**  
software & consulting



MARTIN-LUTHER-UNIVERSITÄT  
HALLE-WITTENBERG



**Maastricht University**